

Dual Soft Heat® Brewer with Docking System

ITEM#

PROJECT

DATE

Features

Coffee brewers with portable servers

- Brews 16.3 to 18.9 gallons (61.7 to 71.5 litres) of perfect coffee per hour.
- Brews ½, 1, or 1½ gallon (1.9, 3.8 or 5.7 litre) batches.
- Patented server heat control automatically shuts off once target temperature is reached. Can be set to 175°–190°F (79.4–87.8°C).
- Electronic grinder interface instructs grinder on exact amount of coffee for selected brew batch size.
- Remote 1 or 2 server docking stations for additional satellite coffee serving.
- Safety-Fresh® patented brew-through lid with vapor seal and spill prevention.
- Variable batch selector knob lets you brew large batches or small servings.
- International electrical configurations available.



Model Dual SH with 1.5 gallon SH Servers*

(servers sold separately)

Dimensions: 35.8" H x 18" W x 20.5"D
(91cm H x 45.7cm W x 52.1cm D)

For current specification sheets and other information, go to www.bunn.com.

* International models may vary in appearance.

Related Products

Easy Clear® EQ-11-TL

Product No. : 30344.1001
Dimensions:
15⁷/₈" H x 3⁵/₈" W x 4¹⁷/₃₂" D
40.3 cm H x 9.21 cm W x 11.5 cm D



Single/Dual Filter Pack

Product No. : 20138.0000
Packed per case: 500
Dimensions:
5¹/₄" Base x 4¹/₄" Sidewall
13.3 cm Base x 10.8 cm Sidewall



SH Server

Product No.: 27850.0001



Easy Clear® ED-11-TL

Product No. : 30244.1001
Dimensions:
14⁹/₁₆" H x 5¹/₁₆" W x 5¹/₁₆" D
36.0 cm H x 12.6 cm W x 12.6 cm D



Two Position Drip Tray

Product No.: 27150.0000



2SH Stand

Product No.: 27875.0000



Model

Dual SH

Agency Listing



Dimensions & Specifications

Model	Product #	Volts	Amps	Tank Heater Watts	Total Watts	Capacity	Cubic Measure	Shipping Weight	Cord Attached
Dual SH Brewer	27900.0001	120/208	28.9	2@2850	5900	16.3 gal./hr.	13.3 ft ³	90 lbs.	No
Dual SH Brewer	27900.0002	120/240	29.1	2@3300	6800	18.9 gal./hr.	13.3 ft ³	89 lbs.	No
Dual SH Brewer*	27900.0020	120/208	29.1	2@3300	5900	18.9 gal./hr.	13.3 ft ³	90 lbs.	No
SH Server(1.5 gal.)	27850.0001	n/a	n/a	n/a	n/a	1½ gal.	2.4 ft ³	17 lbs.	No
SH Server*(1.5 gal.)	27850.0004	n/a	n/a	n/a	n/a	1½ gal.	2.4 ft ³	18 lbs.	No
1SH Stand	27825.0000	120	.8	n/a	90	1 SH Server	1.2 ft ³	13 lbs.	Yes
1SH Stand*	27825.0004	120	.8	n/a	90	1 SH Server	1.2 ft ³	13 lbs.	Yes
2SH Stand	27875.0000	120	1.5	n/a	180	2 SH Servers	2.1 ft ³	22 lbs.	Yes
2SH Stand*	27875.0003	120	1.5	n/a	180	2 SH Servers	2.1 ft ³	22 lbs.	Yes

*Models have black finish.

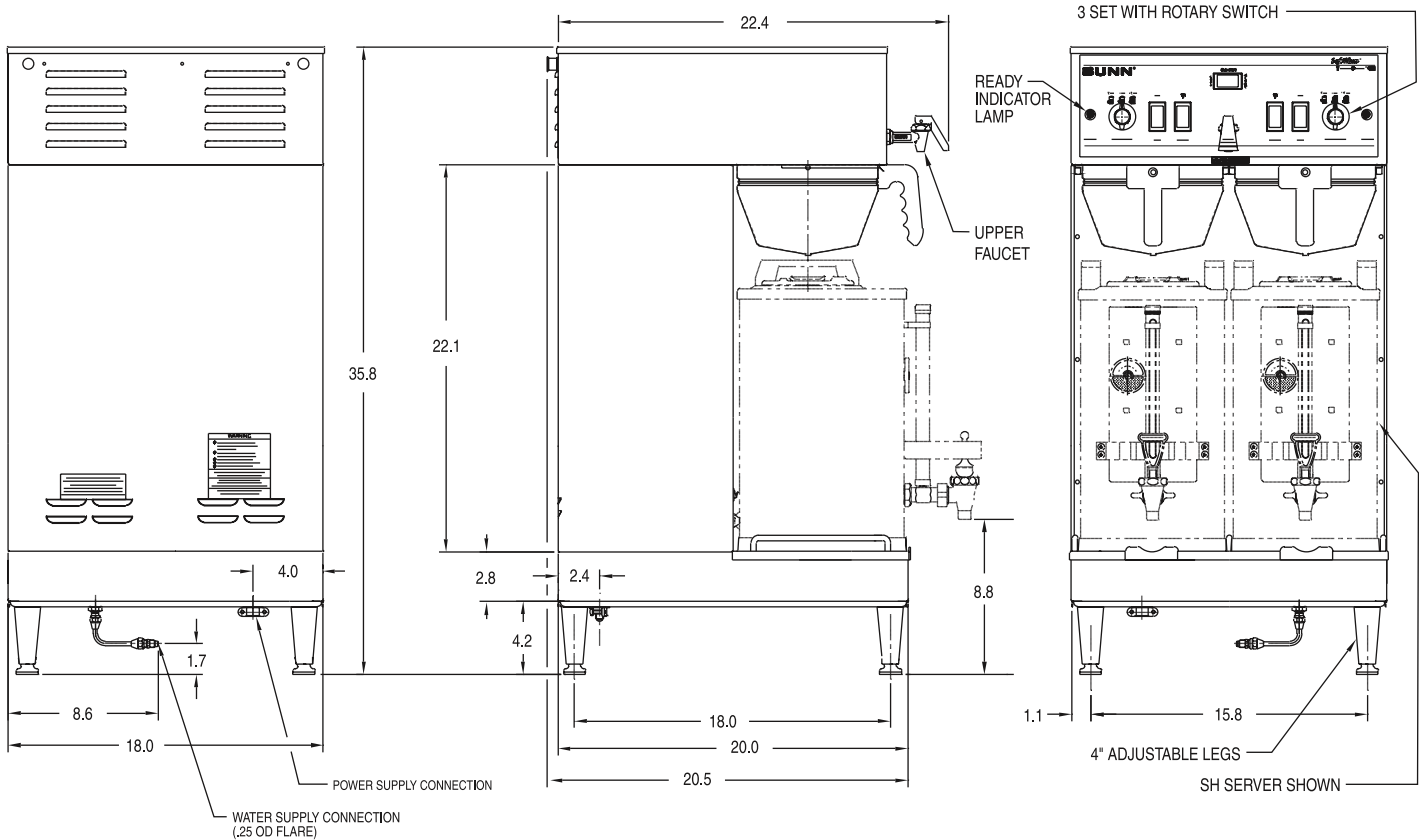
Note: Soft Heat® Brewers and Servers are boxed and shipped separately. All brewers have mechanical thermostats.

Brewing capacity: based upon incoming water temp of 60°F/15°C (140°F/60°C rise) per ½ gallon brew time of 4 minutes.

Models listed as 120/208V or 120/240V must be connected to 208V or 240V electrical service respectively. Please refer to the installation manual.

Electrical: Brewer is 3-wires plus ground service rated 120/208V or 120/240V, single phase, 60Hz.

Plumbing: 20-90 psi (138-621 kPa). Machine supplied with ¼" (6.4 mm) male fitting.



BUNN Corporation - 1400 Stevenson Drive Springfield, Illinois 62703 • 800-637-8606 • 217-529-6601 • Fax 217-529-6644 • www.bunn.com

BUNN® practices continuous product research and improvement. We reserve the right to change specifications and product design without notice. Such revisions do not entitle the buyer to corresponding changes, improvements, additions or replacements for previously purchased equipment.

All dimensions shown in inches. Bunn Corporation owns all copyrights relating to materials in this publication. Please contact Bunn Corporation to request permission to reproduce any portion of this publication.