

BUNN® Powder Autofill Gourmet Ice® System with 3 hoppers

Features

Gourmet Ice® System

- Three large hoppers hold 2 gallons of frozen drinks each.
- Dry product hoppers (5 lb. capacity each) are easy to remove & fill.
- Product and water mix control, adjustable with motor speed from 15 to 90 RPM.
- Lighted display increases sales with product merchandising.
- Refills at a rate of approximately 1.1 fluid ounces per second.
- Flashing light alerts that powder is low.
- 3-year warranty on compressor.
- Available in white or black decor.
- Sanitation listed by ETL to NSF Standard 18 (includes dairy & alcohol) and safety listed by ETL to UL Standard (UL 471) and CSA Standard (C22.2 No. 120).



Model CDS-3 PAF

ITEM#

PROJECT

DATE

Model

CDS-3 PAF

Related Products

For available variations to some BUNN products, please contact your BUNN sales representative.



Clear plastic hoppers pull out easily to refill powdered product.



Entire autofill unit slides back so that product hoppers can be lifted out for cleaning.

BUNN®

Corporate Offices
1400 Stevenson Drive
Springfield, Illinois 62703
Phone
800-637-8606
217-529-6601
Fax
217-529-6644
Technical Services
800-286-6070
Internet
<http://www.bunnomatic.com>

Western Regional Office
16431 Carmenita Road,
Cerritos, California 90701
Phone
562-926-0764
Fax
562-926-0858

Canadian Office
280 Industrial Parkway South
Aurora, Ontario, L4G 3T9
Phone
905-841-2866
Fax
905-841-2775

Patents
Apply



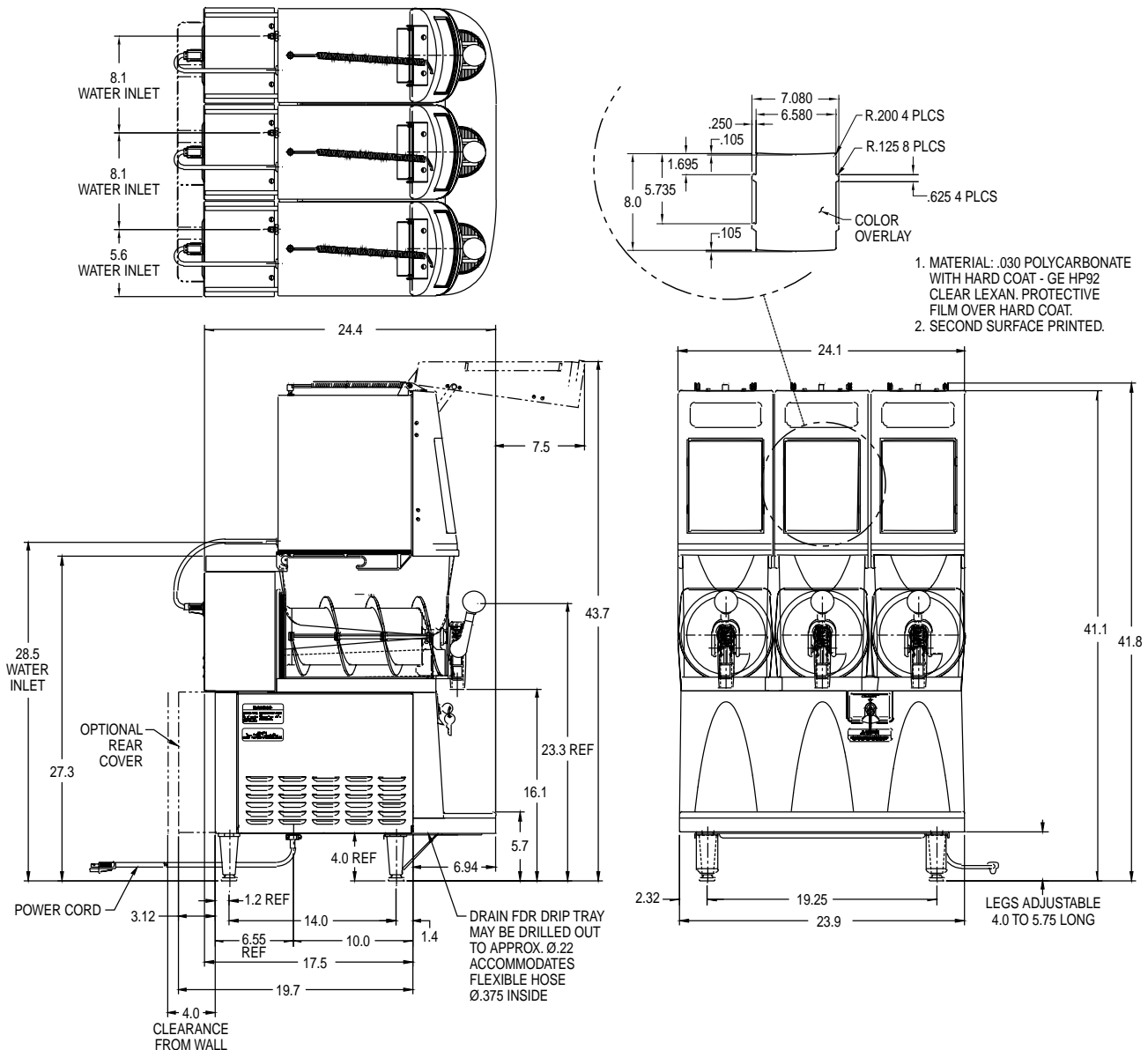
Dimensions & Specifications

Model	Product #	Volts	Amps	Capacity	Cu Ft.	Shipping Weight	Cord Attached
CDS-3 PAF (White)*	29300.0008	120	20	5 lbs. dry product	31.9	274 lbs. (124.6 kg) <i>See Note</i>	Yes
CDS-3 PAF (Black)*	29300.0009	120	20	5 lbs. dry product	31.9	274 lbs. (124.6 kg) <i>See Note</i>	Yes
<i>Note: Includes the following:</i>							
(1) CDS-3 PAF Base	(29286.0003)	120	20	n/a	14.5	179 lbs. (81.4 kg)	Yes
(1) 3-PAF Hopper Group	(29285.0006)	n/a	n/a	3 @ 2 gallons	9.3	35 lbs. (15.9 kg)	n/a
(3) PAF Units	(29500.0000)	120	1.0	1 @ 5 lbs. dry	2.7	20 lbs. (9.1 kg)	Yes

* Model is a non-stock item.

Electrical: Model requires 2-wires plus ground service rated 120V, single phase, 60 Hz.

Plumbing: 20-90 psi (138-621 kPa). Machine supplied with 1/4" male flare fitting.



All dimensions shown in inches.